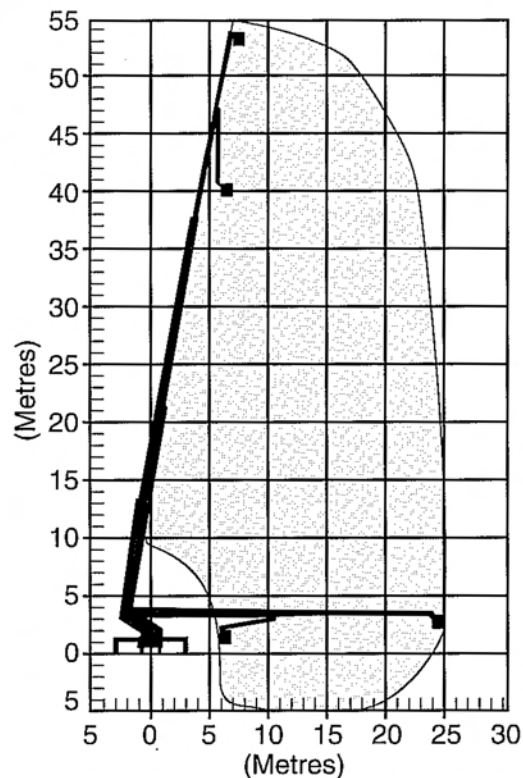


SPECIFICATIONS

Maximum working height	55 m
Working radius at maximum height	7.5 m
Safe working load	250 kg
Maximum working radius	25 m
Maximum working radius of fly	7 m
Stabiliser spread (at 180 degree)	4.25 m
Maximum working depth below ground level	5 m
Travelling height	4.2 m
Travelling width	2.5 m
Travelling length	13.0 m
Overall weight	32.5 t
Basket rotation	180 degree
240 volt outlet in basket	



SHERRIN
Rentals

24/7 AUSTRALIA WIDE

132 138

Email: info@sherrinrentals.com.au Web: www.sherrinrentals.com.au

55 Metre Travel Tower