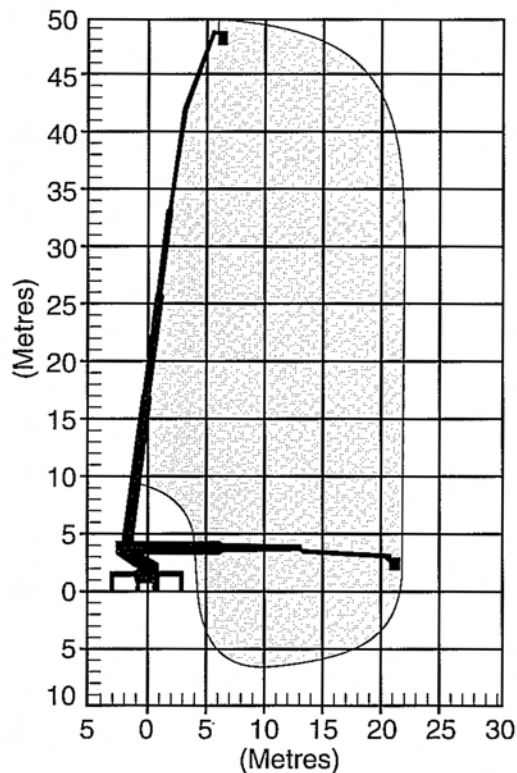


SPECIFICATIONS

Maximum working height	50 m
Working radius at maximum height	7.5 m
Safe working load	250 kg
Maximum working radius	22 m
Maximum working radius of fly	6 m
Stabiliser spread	5.9 m
Maximum working depth below ground level	7 m
Travelling height	3.75 m
Travelling width	2.62 m
Travelling length	11.5 m
Overall weight (Approx.)	29.85 t
Basket rotation	360 degree
240 volt power to basket	



SHERRIN
Rentals

24/7 AUSTRALIA WIDE

132 138

Email: info@sherrinrentals.com.au Web: www.sherrinrentals.com.au

52 Metre Travel Tower