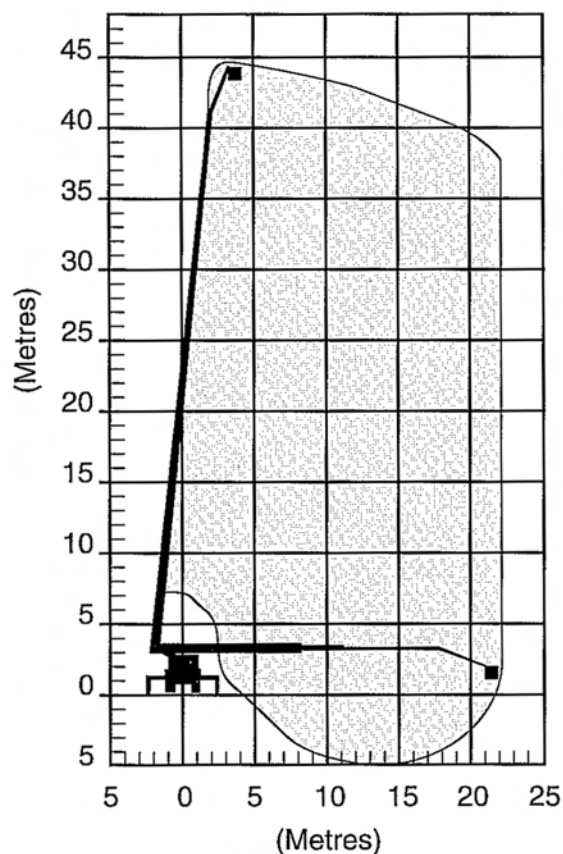


SPECIFICATIONS

Maximum working height	45 m
Working radius at maximum height	6 m
Safe working load	250 kg
Maximum working radius	22 m
Maximum working radius of fly	5 m
Stabiliser spread	5.2 m
Maximum working depth below ground level	5 m
Travelling height	3.9 m
Travelling width	2.5 m
Travelling length	10.25 m
Overall weight (Approx.)	26.3 t
Basket rotation	360 degree
240 volt power to basket	



SHERRIN
Rentals

24/7 AUSTRALIA WIDE

132 138

Email: info@sherrinrentals.com.au Web: www.sherrinrentals.com.au

45 Metre Travel Tower