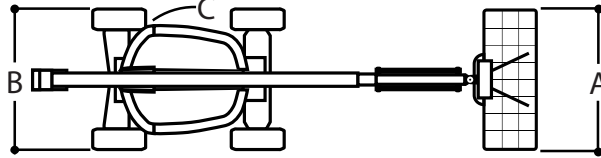
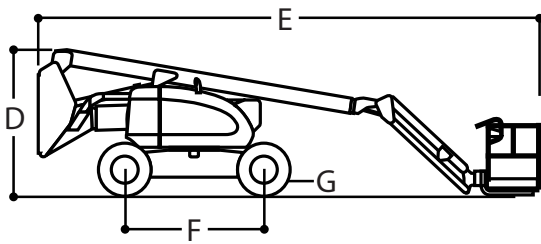
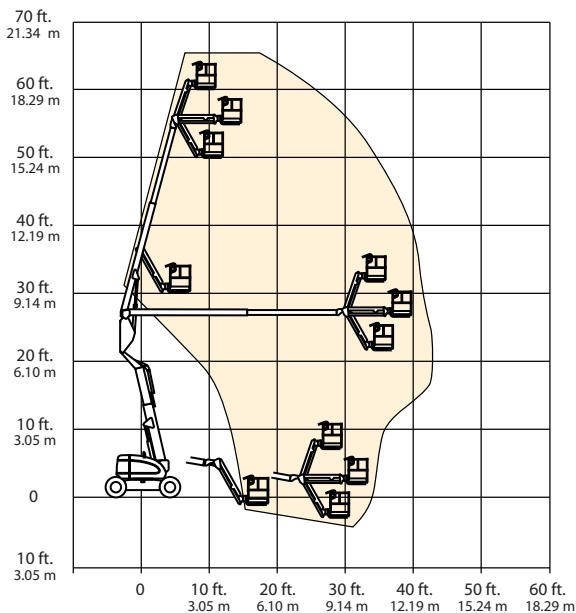


DIMENSIONAL DATA



A	Platform Size	0.91 x 2.44 m
B	Overall Width	2.44 m
C	Tailswing (working condition)	Zero
D	Stowed Height	2.54 m
E	Stowed Length	8.83 m
F	Wheelbase	2.44 m
G	Ground Clearance	20 cm
	Gross Vehicle Weight	10,455 kg
	Max. Ground Bearing Pressure	75 psi (5.27 kg/cm ²)



REACH SPECIFICATIONS

Platform Height	60 ft 7 in. (18.47 m)
Horizontal Outreach	39 ft 9 in. (12.10 m)
Up and Over Clearance	26 ft 7 in. (8.1 m)
Swing	360 Degrees Continuous
Platform Capacity – Restricted	227 kg
Platform Rotator	180 Degrees Hydraulic
Jib (Range of Articulation)	130 Degrees (+70, -60)

CHASSIS

Drive Speed - 2WD/4WD	4.25 mph (6.8 kph)
Gradeability - 2WD/4WD	30%/45%
Tires	14 x 17.5 Lug Tread
Axle Oscillation	8 in. (20.4 cm)
Turning Radius - Inside	
2WS	3.48 m
4WS	1.68 m
Turning Radius - Outside	
2WS	5.38 m
4WS	3.56 m

POWER SOURCE

Dual Fuel Engine, GM Vortec 3000 MPFI	82 hp (61 kw)
Diesel Engine, Deutz D2011L04	49 hp (36.5 kw)
Caterpillar 3044C	63.3 hp (47.2 kw)
Fuel Tank Capacity	113.6 L
Hydraulic Reservoir	115.8 L
Auxiliary Power	12V DC

SHERRIN
Rentals
 AUSTRALIA WIDE
132 138

Email - info@sherrinrentals.com.au Web - www.sherrinrentals.com.au

60 Foot Knuckle Boom