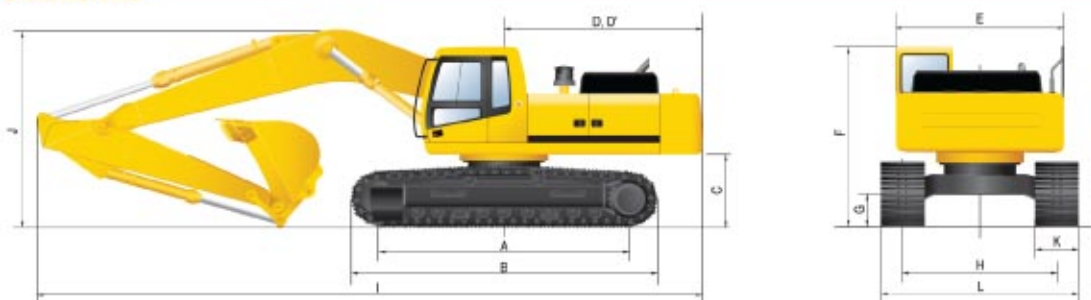


CONTROL Pilot pressure operated joysticks and pedals with detachable lever provide almost effortless and fatigueless operation.

Pilot control	Two joysticks with one safety lever (LH): Swing and arm, (RH): Boom and bucket (ISO)
Travelling and steering	Two levers with pedals
Engine throttle	Electrical, Cable type
Lights	Two lights mounted on the boom and one below the cab

DIMENSIONS



	mm
I Overall length	12000
J Overall height of boom	3600
K Track shoe width	600
L Overall width	3340
D,D Tail swing	3720

SPECIFICATIONS

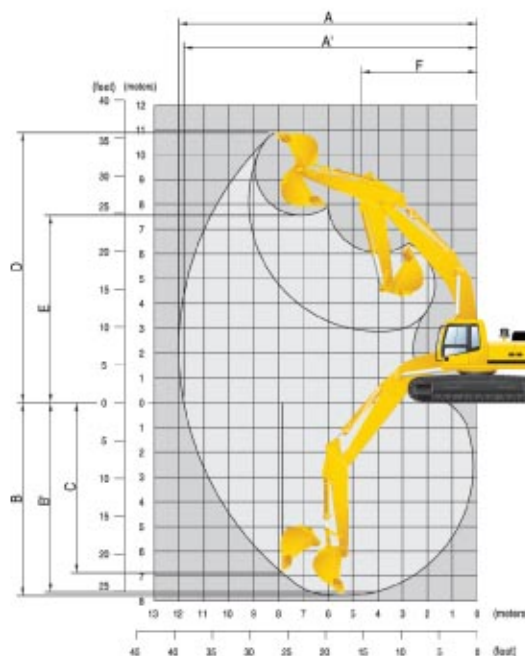
Diesel engine	Water-cooled
Model	Cummins QSM11-C
Fuel tank capacity	610 litres
Hydraulic tank	250 litres
Fuel consumption rate (av. 75-85% full capacity)	26-29 litres/hour

PERFORMANCE

Gradeability	35° / 70%
Bucket Digging Force	26.1 tonne
Operating weight	44 900 kg
Ground Pressure	11.09 PSI

BUCKET ATTACHMENTS

Quick hitch	Yes
Hitch pick up	400 mm
Mud	2000 mm
General purpose	1600 mm
Ripper	Yes
Batter	2000 mm



WORKING RANGES

	mm
Boom length	7060
Arm length	3380
A Max. digging reach	12100
A' Max. digging reach on ground	11900
B Max. digging depth	7790
C Max. vertical wall digging depth	6560
D Max. digging height	11030
E Max. dumping height	7660
F Min. swing radius	4780

SHERRIN Rentals

BRISBANE • DARWIN • TOOWOOMBA • SUNSHINE COAST

132 138

Email - info@sherrinrentals.com.au Web - www.sherrinrentals.com.au

45 Tonne Excavator