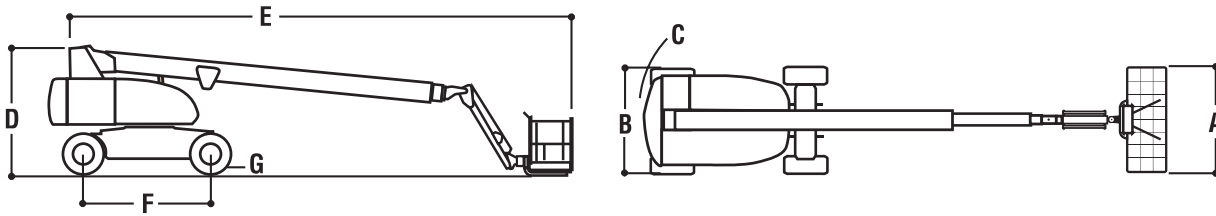
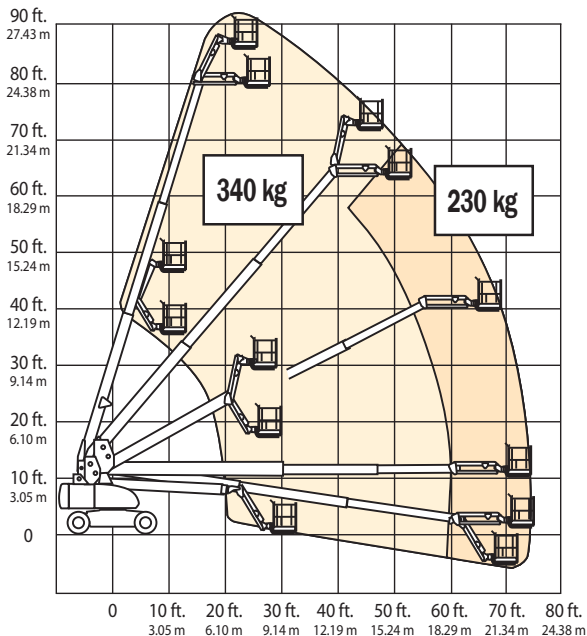


DIMENSIONAL DATA



A	Platform Size	0.91 x 2.44 m
B	Overall Width	2.49 m
C	Tailswing	1.42 m
D	Stowed Height	3.05 m
E	Stowed Length	12.19 m
F	Wheelbase	3.05 m
G	Ground Clearance	30 cm
	Gross Vehicle Weight	16,488 kg
	Max. Ground Bearing Pressure	92.4 psi (6.5 kg/cm ²)



REACH SPECIFICATIONS

Platform Height	86 ft. (26.21 m)
Horizontal Outreach	75 ft. (22.86 m)
Swing	360 Degrees Continuous
Platform Capacity—Restricted	340 kg
Platform Capacity—Unrestricted	230 kg
Platform Rotator	180 Degrees Hydraulic
Jib (Range of Articulation)	6 ft. (1.83 m) 130 Degrees (+70, -60)

CHASSIS

Drive Speed - 2WD/4WD	5.6 kph
Gradeability - 2WD/4WD	30%/45%
Turning Radius - Inside	12 ft. (3.66 m)
Turning Radius - Outside	6.86 m
Tires/Type	Pneumatic 15 x 24.5

POWER SOURCE

Dual Fuel Engine, Ford LRG-425 EFI	82 hp (61 kW)
Diesel Engine, Deutz F4M2011	65 hp (48 kW)
Fuel Tank Capacity	117.3 L
Hydraulic Reservoir	151.4 L
Auxiliary Power	12V DC

SHERRIN
Rentals
 AUSTRALIA WIDE
132 138

Email - info@sherrinrentals.com.au Web - www.sherrinrentals.com.au

86 Foot Boom Lift